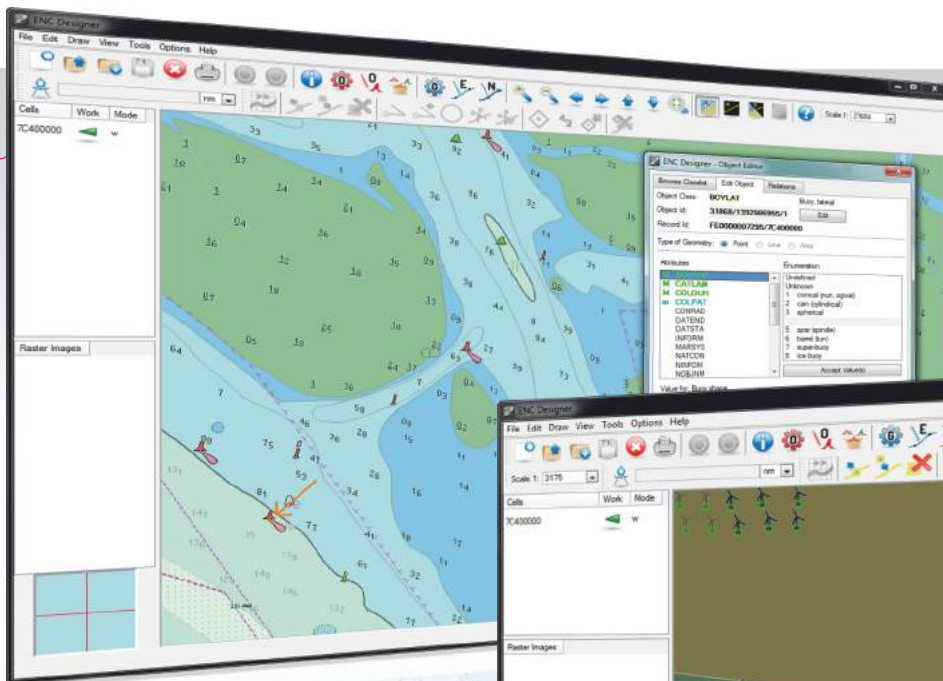
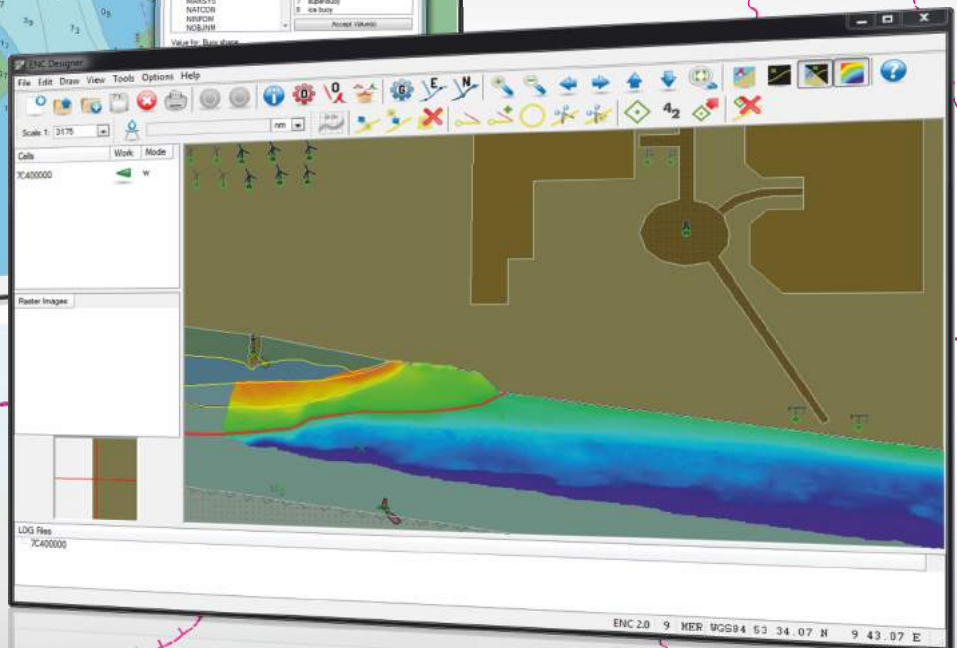


# ENC DESIGNER



ENC Designer – Graphical User Interface



ENC Designer – Bathymetry Mode

## PRODUCT DESCRIPTION

ENC Designer is the central application of the SevenCs ENC tools production suite. It is a powerful and very easy to use software tool that has been developed for the production of S-57 Electronic Navigational Charts (ENCs). Chart production with ENC Designer is not limited to ENCs – Inland ENCs, AML, Port ECDIS and bathymetric products are supported as well. ENC Designer is supplied as a package with ENC Manager and ENC Referencer.

## PRODUCT HIGHLIGHTS

- Easy to use and intuitive graphical user interface
- Powerful filter functions for object selection and data query
- Automatic generation of Group 1 feature objects
- Area Clipping, Feature Copying, Multi-Feature Encoding
- Integrates with ENC Optimizer, ENC Analyzer
- Log files for interactive data review
- Import of xyz Bathymetry data/Bathymetry Mode
- Import depth data in ASCII format (xyz data)
- Pre-defined bathymetry colour palette to visualize the data
- Set parameters to specify the colour display at discrete depth ranges
- Adding multiple coordinates to an edge, users can create new edges from scratch simply by copy and paste actions.
- Additional tools such as makesoe, setAgency, checkdepcont will be automatically integrated in the GUI.

# ENC DESIGNER

## FUNCTIONAL OVERVIEW

### S-57 SUPPORT

ENC Designer has special S-57 import and export functions for a quick conversion from S-57 to SevenCs SENC (direct ENC) format and vice versa.

### EASY DATA CAPTURING AND ENCODING

ENC Designer integrates powerful tools for easy data capturing and feature encoding.

- Tracer for semi-automatic generation of vector geometry based on raster backdrops
- Object Editor for efficient S-57 feature encoding
- Configurable Object Box for creation of single point objects or groups of point features (e.g. buoy with light)

### FEATURE AND GEOMETRY HANDLING

Feature objects and geometry can be queried, analysed and manipulated in many ways.

- Pick Report to retrieve click-to-chart object information
- Object Manager with enhanced filters for effective feature queries and simultaneous encoding of multiple features
- Object Editor for quick and easy feature attribute manipulation
- Geometry Manager with enhanced filters for queries on spatial objects
- Tool set for interactive geometry manipulation

### DATA VALIDATION

ENC Designer provides special functions for S-57 data validation.

- Includes dedicated data validation mode
- Smoothly integrates logs from data validation sessions which can be used for interactive review of validation reports

### DIFFERENT DISPLAY MODES

Chart presentation can be changed according to the needs of the data producer. Different modes are available.

- ECDIS Mode for S-52 compliant presentation
- Geometry Mode for display of vector geometry (nodes, edges, vertices)
- Combi Mode which is a combination of the two other presentation modes
- Mode for display of bathymetric backdrops

### SETTING OPTIONS

Great flexibility is achieved by the integration of customizable settings and configurable options.

- Supports various display settings and integrates a huge set of display filters
- Allows integration of customized object definitions
- Supports numerous coordinate reference systems

### ADDITIONAL TOOLS

ENC Designer comes with a set of small tools that fully integrate into the graphical user interface.

- Automatic creation of Group 1 objects
- Depth area consistency checks

### SUPPORTED FORMATS AND PRODUCTS

- Vector Formats (R/W): S-57 3.0, 3.1.1, 3.1.2, SevenCs SENC (directENC)
- Vector Products (R/W): ENC 2.0, IENC 1.02, 2.0, 2.1, 2.3, 2.4, AML 1.0, 2.1, 3.0, bENC 1.0, PENC 1.0
- Raster Backdrop (R) GeoTiff, Tiff, BMP, PNG, JPG
- ASCII column separated xyz data

### SUPPORTED OPERATING SYSTEMS

- Win 7/8/10 (32 Bit, 64 Bit)