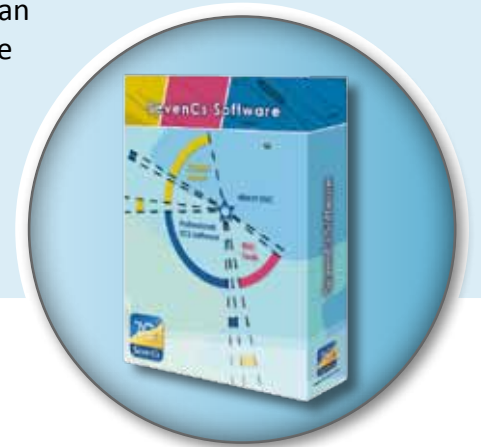




ENC Referencer

PRODUCT DESCRIPTION

ENC Referencer can be used for interactive geo-referencing of image files containing geo-spatial information (paper chart scans, satellite images). For further use an image that has been geo-referenced with ENC Referencer must be loaded in ENC Designer. Then it can serve as a raster backdrop during the process of data capturing (vectorizing) and data verification. ENC Referencer is only supplied as integral part of the ENC Designer Enterprise package.



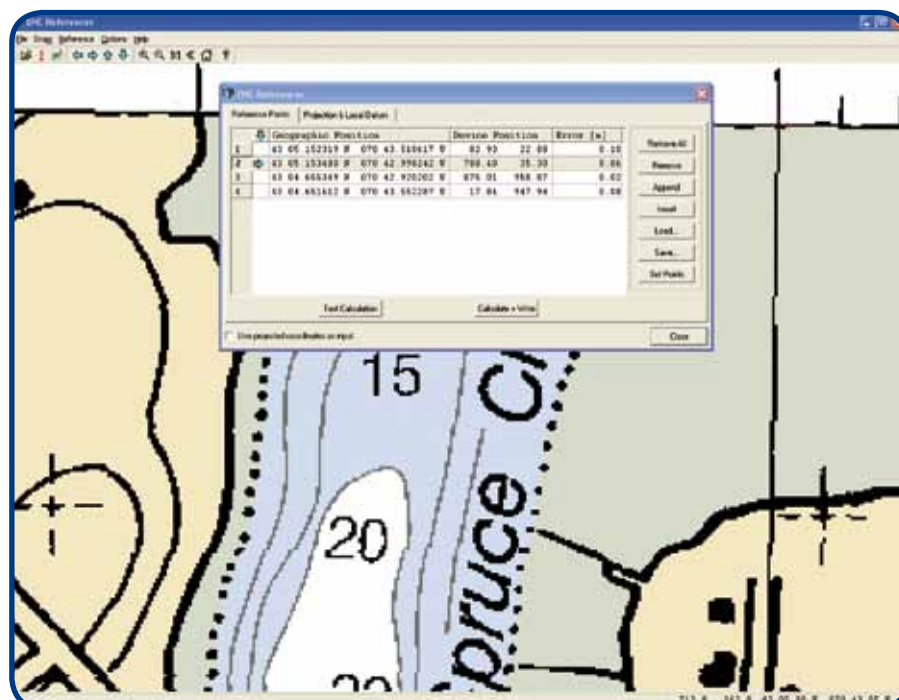
PRODUCT HIGHLIGHTS

⇒ Simple selection of reference points via mouse click

⇒ Easy and quick panning across image

⇒ Support of predefined and custom coordinate systems

⇒ Calculation of referencing accuracy



Graphical User Interface, ENC Referencer

ENC Referencer

FUNCTIONAL OVERVIEW

Handling of Raster Images

ENC Referencer integrates a set of functions to handle and analyze the loaded image files.

- Simple zoom and pan functions
- Additional panning window
- Zoom and pan history

Coordinate Reference System

All the parameters required to define the source coordinate reference system can be entered.

- Integrates S-60 local datum definitions
- Supports user defined local datums (7 parameter or simple shift)
- Supports all common projections
- Least square method (if projection is not known)

Reference Points

Functions that assist the user in specifying the reference point coordinates are available.

- Dialogue with table for display and manual entry of image coordinates and geodetic coordinates
- Retrieval and entry of image coordinates via mouse click
- Automatic focus of image on selected reference point
- Delete and add reference points

Geo-Referencing

Geo-referencing parameters can be calculated, verified and stored.

- Test calculation with display of geo-referencing errors
- Store parameters and write to parameter file
- Load existing parameter file from previous session

Supported Input Formats

- Tagged Image File Format (TIFF)
- Portable Network Graphics (PNG)
- Windows Bitmap (BMP)
- Graphics Interchange Format (GIF)
- JPEG File Interchange Format (JPG)

SYSTEM RECOMMENDATIONS: Microsoft Windows 2000 / XP / Vista / Windows 7 256 MB or more RAM
500 MHz or more CPU

YOUR ENC REFERENCER DEALER



SevenCs GmbH · Ruhrstraße 90 · D-22761 Hamburg
Phone +49 (0)40 851 72 40 · Fax +49 (0)40 851 72 4 79 · sales@sevencs.com · www.sevencs.com