



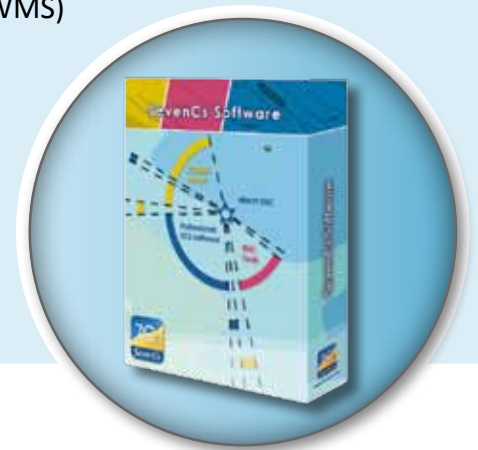
# ChartServer

## PRODUCT DESCRIPTION

There are many applications where it is necessary to display standard electronic nautical charts (ENCs) in combination with, or as a back-drop to, other geo-spatial data. ChartServer is the first standard server software specifically designed to display ENCs, and other nautical chart formats, using OGC compliant web map services (WMS) in order to address this need.

The ChartServer allows software manufacturers or OEMs to develop their own applications, i.e. solutions in which clients access ChartServer in order to utilize the advantages of a central chart data base.

In addition the ChartServer can be used whenever chart producing organizations want to allow people to look at and refer to charts without the possibility to modify them locally.



## PRODUCT HIGHLIGHTS

⇒ Supports Web Map Service (WMS) Version 1.1.1

⇒ Supports a wide variety of S-57 data products and ARCS

⇒ Supports a more comprehensive SevenCs proprietary protocol

⇒ Supports S-63 encrypted data products

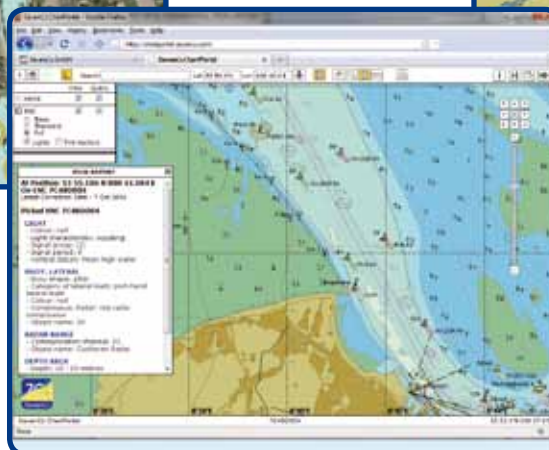
⇒ Prefilled with SevenCs own small scale world dataset

⇒ Automated chart selection by position and scale

⇒ Contains example developer code for a web-client „ChartPortal“



ENC overlay  
(Satellite image by Google earth)



ChartPortal



Fleet tracking  
(Wave heights by OpenMetoc.net.no)

## FUNCTIONAL OVERVIEW

### Supported features and functionality

The ChartServer generates images of vector or raster nautical charts on request of client applications and supports a wide range of core functions and features such as:

- Chart display according to the IHO S-52 standard or InlandECDIS standard
- S-57 Object Query
- Automated chart selection and loading
- Various key nautical chart projections
- S-63 encrypted format for official ENC's
- Flexible layer definition
- Integration of AIS via TCP or UDP
- Remote server configuration
- Small scale (1:12 Mio) world data set

### Supported Protocols

The ChartServer supports two protocols, the

- Open Geospatial Consortium (OGC) compliant Web Map Service (WMS), Version 1.1.1 and the
- SevenCs proprietary protocol for a more flexible chart display configuration

### Supported Chart Products

The ChartServer supports the S-57 based vector chart products

- Electronic Navigational Chart (ENC)
- InlandENC (IENC)
- Port ENC (PENEC)
- Admiralty Information Overlay (AIO) and the raster chart product
- Admiralty Raster Chart Service (ARCS)

### Application Note

S-57 chart data is held in a vector database that must be dynamically interpreted in order to generate WMS images. For this reason, ChartServer is primarily designed for the support of multi-user based server applications within a closed network environment, rather than open Internet based services with large numbers of users. Typical applications for ChartServer include command and control systems, Vessel tracking systems, offshore exploration systems, etc.

### SYSTEM RECOMMENDATIONS:

Microsoft Windows XP, 7, Server 2003 and 2008 R2  
2GB RAM    2 GHz CPU    SATA 2

## YOUR CHARTSERVER DEALER



**SevenCs GmbH · Ruhrstraße 90 · D-22761 Hamburg**  
Phone +49 (0)40 851 72 40 · Fax +49 (0)40 851 72 4 79 · sales@sevencs.com · www.sevencs.com