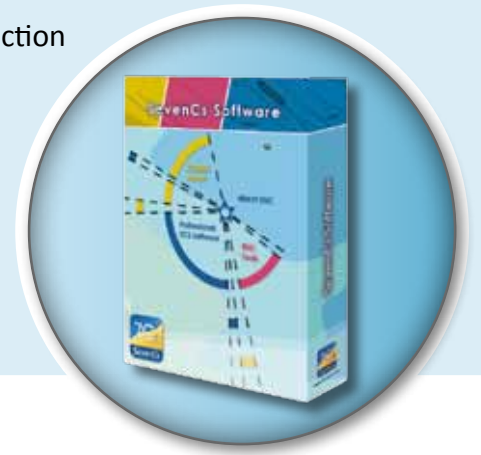




ENC Analyzer

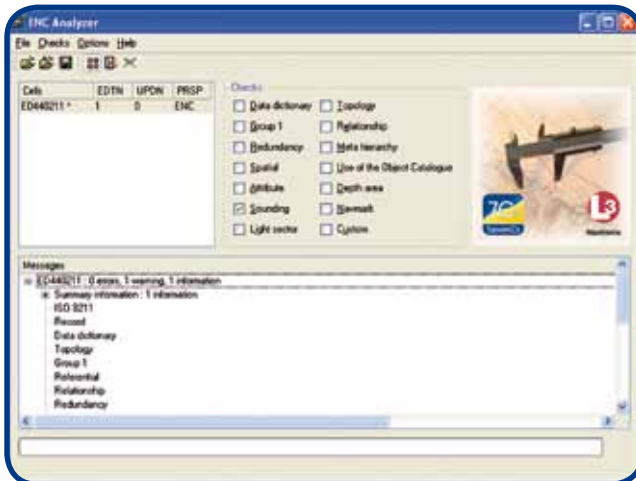
PRODUCT DESCRIPTION

ENC Analyzer is the validation component of the ENC Tools production suite. It is distributed by SevenCs and L-3 Nautronix (former HSA Systems) worldwide. ENC Analyzer integrates into the SevenCs Chart Production Workflow to provide quality control during S-57 ENC production and maintenance. ENC Analyzer loads ENC, AML and Inland ECDIS cells from an S-57 format and runs an extensive series of checks to identify the wide variety of errors that can occur during the initial production phase and the subsequent maintenance cycle.

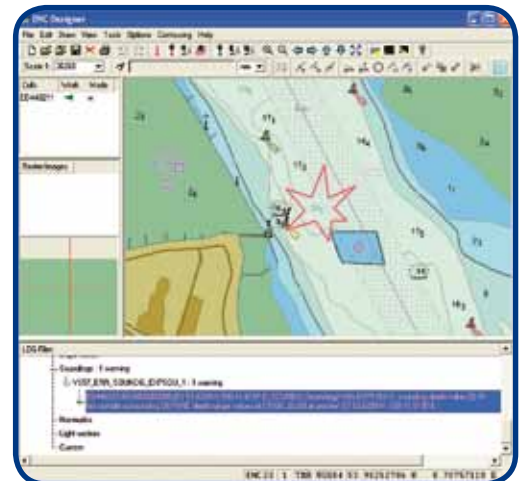


PRODUCT HIGHLIGHTS

- ⇒ Supports IHO S-58 Recommended ENC Validation Checks
- ⇒ Used either in a stand-alone mode or interactively with ENC Designer
- ⇒ Selectable check groups for the different stages of production
- ⇒ Over 800 individual checks applied to your data
- ⇒ Messages reported as either errors or warnings depending on severity
- ⇒ ENC update validation and ability to check ENC Exchange Sets
- ⇒ Reported messages can be grouped and exported, based on errors, warnings and error codes
- ⇒ Supports inclusion of user defined checks



ENC Analyzer Graphical User Interface



Interactive Log file reviewed in ENC Designer

FUNCTIONAL OVERVIEW

Checks according to the rules of IHO Standards

ENC validation with ENC Analyzer complies with the rules that have been defined in the respective IHO standards.

- Recommended ENC Validation Checks S-58
- ENC Product Specification
- Use of the Object Catalogue for ENC
- Data Dictionary and Data Structure definitions

Checks divided into Categories

Checks are divided into different categories. The user can choose to do all checks or to focus on selected categories.

- Data Dictionary
- Group 1
- Redundancy
- Spatial
- Attribute
- Sounding
- Light Sector
- Topology
- Relationship
- Meta Hierarchy
- Use of the Object Catalogue
- Depth Area
- Navigational Marks
- Custom Checks

Operation Modes

- Stand-alone mode
- Integration in ENC Designer and regular production workflow

Detailed Reporting

ENC Analyzer presents log files with detailed information about the results of the applied checks to the user.

- Presentation of messages in dedicated log window
- Full cell header summaries
- Messages labeled as warnings or errors (depending on severity)
- Grouping of messages according to category of validation checks
- Messages cross-referenced to standards
- Export of messages

Additional Functions

- Inland ENC specific checks
- Definition of additional custom checks

Supported Formats, S-57 file types, Products

- Vector Formats (R): S-57 3.0, 3.1
- S-57 file types (R): S-57 base files (.000), S-57 update files (.00n), S-57 Exchange Sets (CATALOG.030, CATALOG.031)
- Vector Products (R): ENC 2.0, IENC 1.02, 2.0, 2.1, AML 1.0, 2.1

SYSTEM RECOMMENDATIONS: Microsoft Windows XP / Vista / Windows 7 256 MB or more RAM
1 GHz or more CPU

YOUR ENC ANALYZER DEALER



SevenCs GmbH · Ruhrstraße 90 · D-22761 Hamburg
Phone +49 (0)40 851 72 40 · Fax +49 (0)40 851 72 4 79 · sales@sevencs.com · www.sevencs.com